

Glory to God

583

Gloria, gloria

Capo 3: (Bm)

(Em) (A)

(D)

Dm

Gm

C

F

(chords continue)

Glo - ry to God, glo - ry to God, glo - ry in the high - est!

Glo - ri - a, glo - ri - a, in ex - cel - sis De - o!



Glo - ry to God, glo - ry to God, al - le - lu - ia, al - le - lu - ia!

Glo - ri - a, glo - ri - a, al - le - lu - ia, al - le - lu - ia!

**May be sung as a canon.*

105

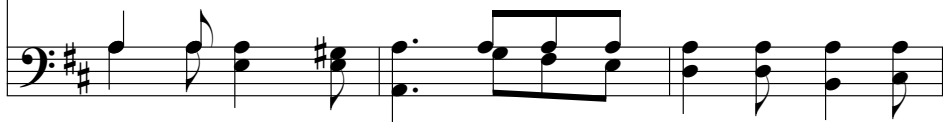
People, Look East



1 Peo - ple, look east. The time is near of the
 2 Fur - rows, be glad. Though earth is bare, one more
 3 Birds, though you long have ceased to build, guard the
 4 Stars, keep the watch. When night is dim one more
 5 An - gels, an - nounce with shouts of mirth Christ who



crown - ing of the year. Make your house fair as you are
 seed is plant - ed there. Give up your strength the seed to
 nest that must be filled. E - ven the hour when wings are
 light the bowl shall brim, shin - ing be - yond the frost - y
 brings new life to earth. Set ev - ery peak and val - ley



Peo - ple, look



a - ble; trim the hearth and set the ta - ble.
 nour - ish, that in course the flower may flour - ish.
 fro - zen God for fledg - ing time has cho - sen.
 weath - er, bright as sun and moon to - geth - er.
 hum - ming with the word, the Lord is com - ing.



This text was written to provide a new Advent text for an existing carol tune, here named for the city in eastern France where it originated. The author has imaginatively expressed the cosmic implications of Christ's coming by addressing each stanza to a part of creation.

JESUS CHRIST: ADVENT

east and sing to - day:



Peo - ple, look east:

Love, the Guest, is on the way.
Love, the Rose, is on the way.
Love, the Bird, is on the way.
Love, the Star, is on the way.
Love, the Lord, is on the way.

Peo - ple, look east:

(Love is on the way.)



SERVICE MUSIC

606 Praise God, from Whom

607 All Blessings Flow

Doxology

Praise God, from whom all bless- ings flow; praise Christ, all peo - ple

here be - low; praise Ho - ly Spir - it ev - er - more; praise

Tri - une God, whom we a - dore. A - men.


*Or "God"

TEXT: Thomas Kerl, 1695, L/109
MUSIC: Genevan Psalter, [153]

OLD HUNDREDTH
LM


Come to the Table of Grace 507

Capo 3: (D) (A) (Bm) (D7/A) (G)
F C Dm F7/C B^b




1 Come to the ta - ble of grace. Come to the

(A) (D) (A) (D) (Em)
C F C F Gm



ta - ble of grace. This is God's ta - ble; it's

(D/A) (G) (D/A) (A7) (D) (G) (D)
F/A B^b F/C C7 F B^b F



not yours or mine. Come to the ta - ble of grace.

- 2 Come to the table of peace...
- 3 Come to the table of love...
- 4 Come to the table of hope...
- 5 Come to the table of joy...

The simple, formulaic nature of this song makes it especially suitable for use during the communion portion of the Lord's Supper. Because it can be learned readily and does not require reference to a printed source, it frees people to sing before and after receiving the elements.

119 Hark! The Herald Angels Sing

1 Hark! The her - ald an-gels sing, "Glo - ry to the new-born king.
 2 Christ, by high - est heaven a-dored, Christ, the ev - er - last - ing Lord,
 3 Hail the heaven-born Prince of Peace! Hail the sun of righ-teous-ness!

Peace on earth and mer - cy mild, God and sin - ners rec - on - ciled!"
 late in time be-hold him come, off-spring of the vir-gin's womb.
 Light and life to all he brings, risen with heal - ing in his wings.

Joy - ful, all ye na - tions, rise; join the tri-umph of the skies;
 Veiled in flesh the God-head see; hail the in-car - nate de - i - ty,
 Mild he lays his glo - ry by, born that we no more may die,

with the an-gel - ic host pro-claim, "Christ is born in Beth - le - hem!"
 pleased in flesh with us to dwell, Je - sus, our Em-man - u - el.
 born to raise us from the earth, born to give us sec - ond birth.

Brought together in the mid-19th century, the text and tune of this familiar carol began in quite different forms. The text had ten stanzas and began, "Hark, how all the welkin rings." The tune was created for a festival celebrating Gutenberg's introduction of moveable type.

JESUS CHRIST: BIRTH

Hark! The her - ald an - gels sing, "Glo - ry to the new-born king!"

The image shows a musical score for the hymn "Hark! The herald angels sing." It consists of two staves: a treble clef staff on top and a bass clef staff on the bottom. The key signature is one flat (B-flat major or D minor). The melody is written in the treble clef, and the bass line is in the bass clef. The lyrics are written below the treble staff. The music features a mix of chords and single notes, with a prominent use of chords in the bass line. The piece concludes with a double bar line.