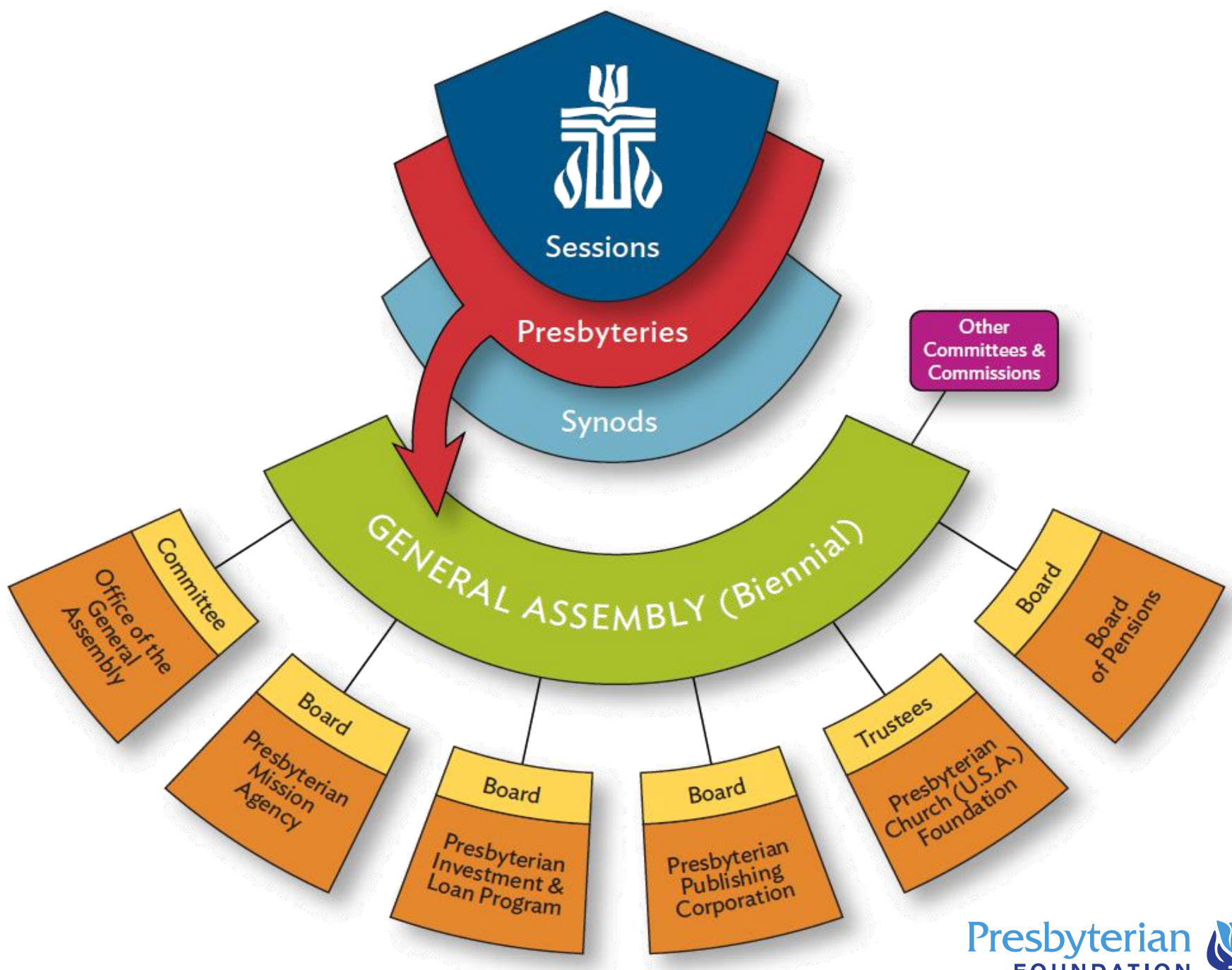




**How will you Divide Your Pie?**



# Presbyterian Foundation

---

A vital part of the Presbyterian Church (U.S.A), the Foundation was established in 1799 and cultivates, attracts, and manages financial resources of individuals and institutions to further Christ's mission.



Bringing People and Mission Together

Do not store up for yourselves treasures on earth, where moths and vermin destroy, and thieves break in and steal. But store up for yourselves treasures in heaven, where moths and vermin do not destroy, and thieves do not break in and steal. ***For where your treasure is, there your heart will be also.***

The eye is the lamp of the body, if your eyes are healthy, your whole body will be full of light. But if your eyes are unhealthy, your whole body will be full of darkness. If then the light within you is darkness, how great then is that darkness.

No one can serve two masters. Either you will hate the one and love the other, or you will be devoted to one and despise the other. ***You can not serve both God and money.***

- Matthew 6: 19-24

Will

Advanced Healthcare Directive

Trust

Power of Attorney: Health and Property

Retirement Plans

Life Insurance





Real Property;  
Personal Property;  
Retirement Plans;  
Insurance;  
Securities; Business  
Interests; Cash, etc.



Charitable Trust: CRT/CLT

Direct Bequest

Donor Advised Fund

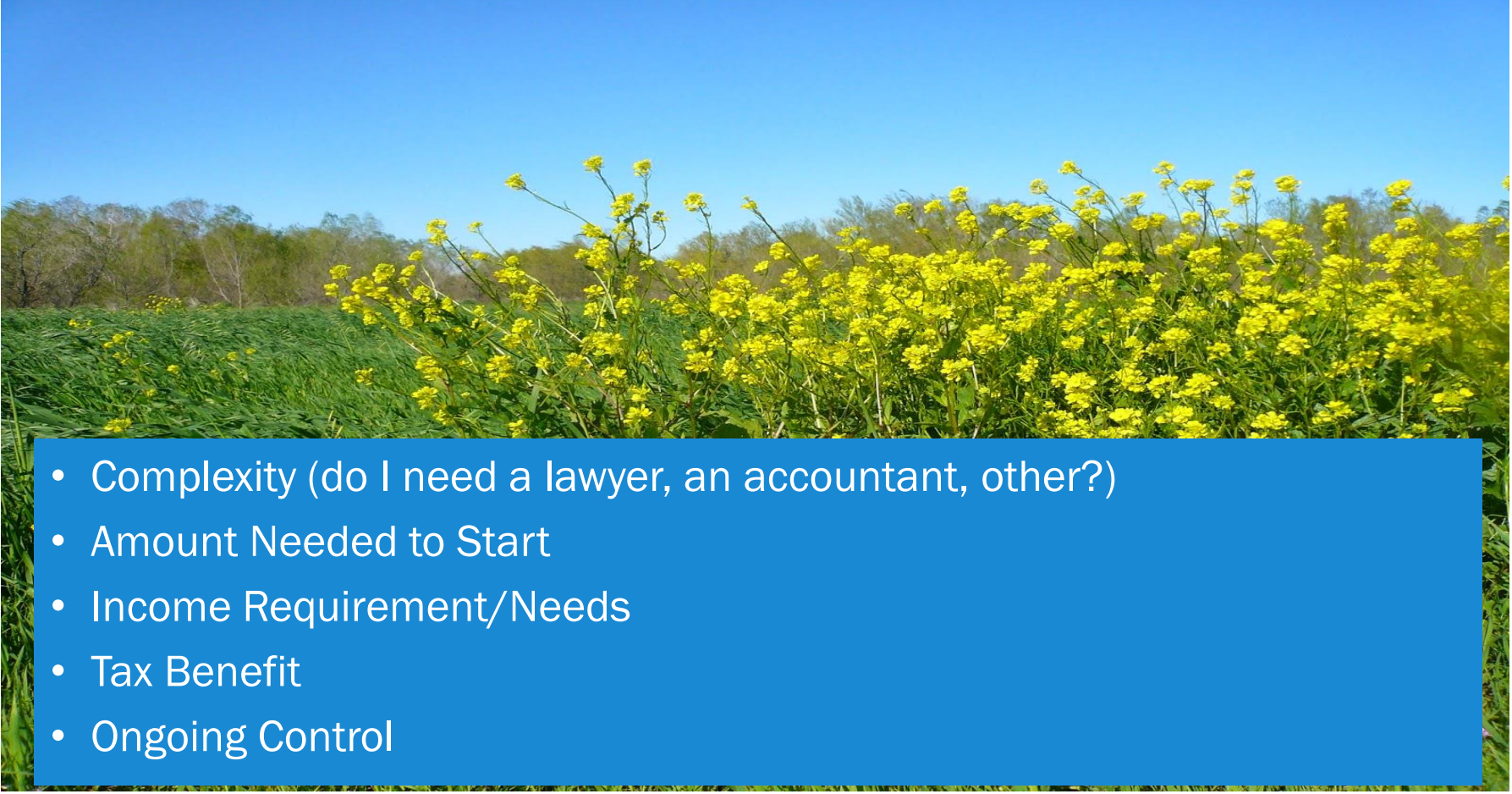
Pooled Income Fund

Retirement Plans/QCD - RMD

Endowment



# Factors to Consider

- 
- A photograph of a field of yellow wildflowers, likely rapeseed, in full bloom. The flowers are in the foreground and middle ground, with a line of trees in the background under a clear blue sky. A blue rectangular box is overlaid on the bottom left of the image, containing a list of factors to consider.
- Complexity (do I need a lawyer, an accountant, other?)
  - Amount Needed to Start
  - Income Requirement/Needs
  - Tax Benefit
  - Ongoing Control

# Start Today

- Donor Advised Fund
  - Pooled Income Fund
  - Charitable Trust
- Pooled Income Fund  
IRA – Qualified Charitable  
Distribution

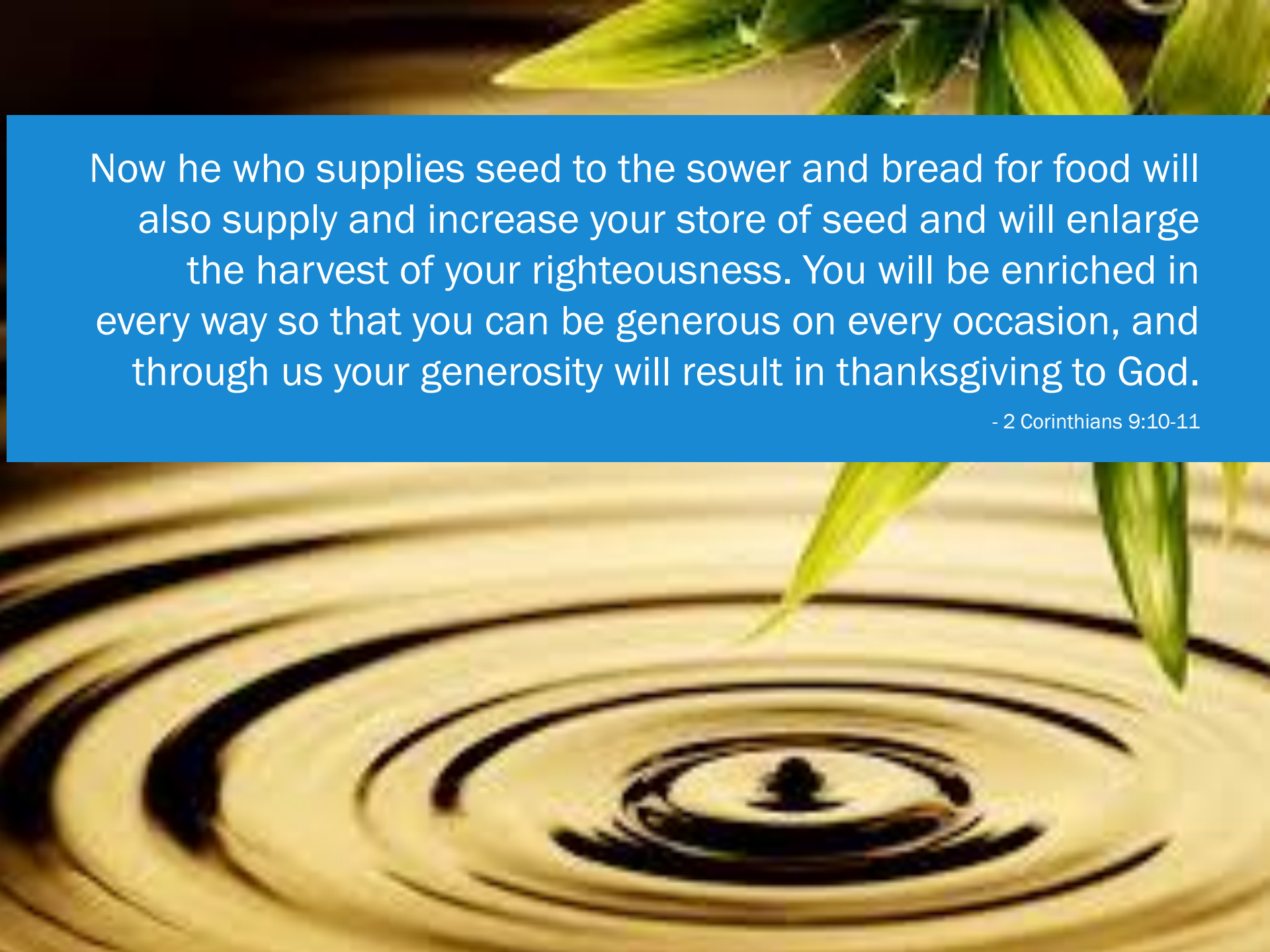




# Do it Tomorrow

- Bequest
- Charitable Trust
- Endowment





Now he who supplies seed to the sower and bread for food will also supply and increase your store of seed and will enlarge the harvest of your righteousness. You will be enriched in every way so that you can be generous on every occasion, and through us your generosity will result in thanksgiving to God.

- 2 Corinthians 9:10-11



**Sherri Finke, CLU**  
**Ministry Relations Officer, So**

510-688-8595 Toll-free: 866-860-3383  
[maggie-harmon@presbyterianfoundation.org](mailto:maggie-harmon@presbyterianfoundation.org)



The earth is the Lord's, and everything in it,  
the world and all who live in it;  
For he founded it on the seas  
and established it on the waters.  
Who may ascend the mountain of the Lord?  
Who may stand in his holy place?  
The one who has clean hands and a pure heart,  
who does not trust in an idol  
or swear by a false god.

- from Psalm 24

Idol:



an object of  
extreme devotion



# How do we create idols?

---

- We believe an object has special power
- We believe an object gives us special power
- We give our power to an object

When you gather the grapes of your vineyard, do not glean what is left; it shall be for the alien, the orphan, and the widow. Remember that you were a slave in the land of Egypt; therefore I am commanding you to do this.

- Deuteronomy 24: 21-24

